



TANDEM T FARMS

2024

**PRIVATE TREATY
PUREBRED SIMMENTAL
BULLS FOR SALE**

Smoky Lake, Alberta

Welcome!

TANDEM T FARMS

We cannot start this year's catalogue until we thank all the neighbors and friends that bought bulls last year. Wow!! Your support has been so amazing, even those in the area that called with words of support. It all truly means so much to us and we cannot be doing this without you. Last year's bulls sold to our local neighborhood, the closest haul 2 miles and farthest was Craigend, AB.

This year on offer we have 16 bulls, ranging from performance gains, mid-range calving ease and heifer bulls. We use artificial insemination extensively to bring in proven, or new genetics. With the mild weather this year, it seemed to facilitate extra growth, which has been nice to see. All the bulls are parentage verified and have enhance EPD testing completed, which improves the accuracy of the EDP's. They have all been tested for polled and color coat expression.

These bulls are fed lean and developed to last. After weaning, they were moved on to an ungrazed fall pasture and developed on Bullseye development pellet. After that, moved on to hay and pellets for the winter. We have a small group, so docility is extremely important to us.

All bulls will be vaccinated, and semen evaluated prior to delivery to their new homes.

- *The Ponich's*



CONTACT



Thomas's Cell: 780.656.8836

Tori's Cell: 780.603.8292



P.O. Box 136, Smoky Lake, AB. T0A 3C0
59017-RR172A



@TDMT2020

AVG EPDS

CE	BW	WW	YW	Milk	MCE	MWWT
7.7	3.6	76.8	111.4	26.0	4.1	64.1



Genomically enhanced EPD (GE-EPD) are considerably more accurate on young animals than standard EPD. The reason is because the genetic evaluation now has a new source of information to make genetic predictions: the animal's own genome. The genome is host to a large number of known gene locations that are associated with a quantifiable effect for performance traits.





Dam CMS 122J

Homo Polled/Hetero Black

Gestation: 280 days

A tremendous Walk This Way son, out of a beautiful Czech-Mate Livestock bred heifer we picked up at the SimPower sale in 2022. Walk The Talk, is a wide top bull, out of an impressive, perfect uttered dam with proper footing. She is backed by the proven, DRAKE Poker Face 2X sire. CMS Firecracker 122J has developed into a very attractive female, to which, we wish we had a few more of. This combination with MADER Walk This Way is absolutely one to be desired. Walk The Talk's attractive blaze sweetens the package, along with his outstanding EPD's is one to look at! He has great calving ease, with impressive gains from MADER Walk This Way 224B, which will continue to use in our breeding program.



1

Lot 1 TANDEM T **WALK THE TALK** 3L
 1429031 TDMT 3L Jan. 05 2023 Polled

NCB COBRA 47Y	LFE VIPER 455U
MADER WALK THIS WAY 224B	NCB MISS DREAM 22T
MADER P IRON SUGAR 7X	MADER P BLACK IRONMAN 22U
	LFE FAMOUS 632T
DRAKE POKER FACE 2X	JS SURE BET 4T
CMS FIRECRACKER 122J	DRAKE TULA 1R
CMS FIREWORK 907G	MRL MISSILE 138C
	LVS ZANTA 10Z

EPDS	CE	BW	WW	YW	Milk	MCE	MWWT
	10.8	0.1	87.4	134.7	26.2	8.3	69.9
	BW: 90	ADJ WW: 810	SEPT 14 WW: 892	ADJ YW: 1376			

Lot 2 TANDEM T **WALK THIS WAY** 15L
 1420764 TDMT 15L Jan. 20 2023 Polled

NCB COBRA 47Y	LFE VIPER 455U
MADER WALK THIS WAY 224B	NCB MISS DREAM 22T
MADER P IRON SUGAR 7X	MADER P BLACK IRONMAN 22U
	LFE FAMOUS 632T
DOUBLE BAR D CONFIDENCE 179D	DOUBLE BAR D CHANDLER 143
RCF BLACK TRACKER 695H	DOUBLE BAR D LYNNEA 613Y
BEE BLK TRACKER 695D	MRL PRETTY RECKLESS 68B
	KOP MS TRACKER 49X

EPDS	CE	BW	WW	YW	Milk	MCE	MWWT
	7.1	2.1	93.8	142.7	28.3	4.4	75.2
	BW: 97	ADJ WW: 812	SEPT 14 WW: 886	ADJ YW: 1372			



Dam RCF 695H

Homo polled/Hetero Black

Gestation: 287 days

Wow! Where to start with 15L. His dam RCF 695H knocked it out of the park again! He is hands down, this year's fan favorite pick of the pen. His natural muscle tone, easy going demeanor and super growth has more than impressed! MADER Walk This Way 224B is a proven sire, that works! This combination is one to be sought after! His full brother, TANDEM T Walk This Way 9K, sold to our close neighbors, Jake and Sasha George, which we have had the pleasure of going on pasture tours to see his development. He has grown into an amazing bull with tremendous hip, style, and excellent feet. TDMT 15L will not disappoint with his attractive blaze and swagger!



2



Homo Polled/Homo Black

Gestation: 288 days

This guy we have watched develop and only get better and better. He ranks top 5% in wean weight, with also having a great calving ease disposition about him. His dam is a no miss cow, catching on the first cycle every time. Both 6L's half sisters had the top wean weights in our replacement heifer pen.

Lot 3

TANDEM T BATTLE CRY 6L

1419556 TDMT 6L Jan. 11 2023 Polled

HART STATE OF WAR 056C WELSH'S WARSAW 312Z
MRL BATTLE CRY 2G HART MISS 102A
 MRL MISS 7393E MRL MISSILE 138C
 TSN MS EDITION 55W
 CNS DREAM ON L186
TSF GALA 35G TSF MELISSA 104X
 SUNNY VALLEY DESTINY 55C SVS CAPTAIN MORGAN 11Z
 SNIDER'S BLACK DESTINY

EPDS	CE	BW	WW	YW	Milk	MCE	MWWT
	10.1	2.2	91.7	131	24.9	6	70.8

BW: 99 ADJ WW: 756 SEPT 14 WW: 875 ADJ YW: 1234

Lot 4

TANDEM T HIGHSTATE 10L

1420026 TDMT 10L Jan. 15 2023 Polled

GLS INTEGRATE Z3 MR NLC UPGRADE U8676
HART INTERSTATE 102E GLS MISS BTE W149
 HART MISS 138B NEW TREND WAY COOL 6W
 HART LADY INVASION U046
 TJ 57J THE GAMBLER
TSF GRAZIE 8G HSF RED FORTUNES SIS 33
 TSF EMILY 63E TSF DEUCE 22Z
 TSF CASANOVA 20Z

EPDS	CE	BW	WW	YW	Milk	MCE	MWWT
	10.7	3.1	92.4	141.6	30.8	5.8	77

BW: 102 ADJ WW: 858 SEPT 14 WW: 980 ADJ YW: 1330



Dam TSF 8G

Hetero Polled/ Hetero Black

Gestation: 282 days

The highest wean weight of the 2023 calf crop, came from HIGHSTATE 10L. His dam has natural docility that reflects in her calf crop every year, with incredible gains and nothing extra added. Sired by HART INTERSTATE 102E, from Hart Simmentals in North Dakota. A solid sire, purchased by Ashworth's Farm and Ranch, who were kind enough to share a few straws with us. HIGHSTATE 10L with his amazing hair coat, will absolutely lay down pounds in his future progeny, no doubt about it!



Dam TSF 14B

Homo Polled/Hetero Black

Gestation: 288 days

Another HART Interstate son out of a proven dam, from Triangle Stock Farms, TSF 14B. If you are looking to increase frame mass in your cow herd, this guy will do the job. His dam is a solid cow, with a great milk supply. His EPD profile is one to consider!



5

Lot 5	TANDEM T HIGHSTATE 14L						
	1420755	TDMT 14L Jan. 20 2023 Polled					
	GLS INTEGRATE Z3 HART INTERSTATE 102E HART MISS 138B	MR NLC UPGRADE U8676 GLS MISS BTE W149 NEW TREND WAY COOL 6W HART LADY INVASION U046 HARVIE JDF WALLBANGER111X SMOKY HEIGHTS PAIGE LBR CROCKET R81 SKORS BLACK MAGNOLIA 250U					
	JDF WALLBANGER 61Z TSF BEYONCE 14B SKORS MS MAGNOLIA 416X						
EPDS	CE 9.9	BW 2.9	WW 81.6	YW 132.9	Milk 26	MCE 5.2	MWWT 66.8
	BW: 104	ADJ WW: 742	SEPT 14 WW: 835	ADJ YW: 1289			

Lot 6	TANDEM T RED FULLY LOADED 11L						
	1423773	TDMT 11L Jan. 16 2023 Polled					
	W/C LOADED UP 1119Y WKF FULLY LOADED 1G BLACKSAND LINETTE 854U	REMINGTON LOCK N LOAD 54U AUBREYS BLACK BLAZE III SPRINGCREEK LINER 104S BLACKSAND SADIE 22206S HARVIE JDF WALLBANGER111X SUNNYVALLEY BLK JENNA 88U CROSSROAD RED ANSWER 646Z CROSSROAD TUSSELE 50T					
	SVS CAPTAIN MORGAN 11Z S17 JAYDA 19J S17 DILLY 41D						
EPDS	CE 10.7	BW 1.1	WW 79.7	YW 116.9	Milk 27	MCE 6.3	MWWT 66.9
	BW: 82	ADJ WW: 833	SEPT 14 WW: 885	ADJ YW: 1409			

Homo Polled/Non-Dilutor

Gestation: 288 days

This red baldy had a moderate birth weight of 82 lbs, with tremendous gains. Weaning out on September 14th at 885lbs, straight off his dam from Section 17 Livestock, which we purchased, as a bred heifer from Travis and Larissa Rathgeber at Transcon Simmsational in 2022. He is dark red, with a fantastic structure. He will provide caving ease with the gains everyone is looking for!



6



7



Sire DEW NORTH 102C

Homo Polled/ Hetero Black

Gestation: 290 days

Dew South 12L is attractive with his white markings, stemming from his sire DEW NORTH 102C. Packed with calving ease at the top 15% of the breed. His early muscle expression style and curly hair coat had many people asking about him. His dam CARPS 182J who is straight out of HARVIE JDF WALLBANGER111X, a very well utilized and proven sire.

Lot 7

TANDEM T **DEW SOUTH** 12L

1420495 TDMT 12L Jan. 18 2023 Polled

HTP/SVF DURACELL T52 CNS DREAM ON L186
GSC GCCO DEW NORTH 102C HTP SVF HONEYDEW
 WELSH'S SCARLET 161Z WELSHS DEW IT RIGHT067T
 WELSHS ROXIE 103W
 HARVIE JDF WALLBANGER111X SHS ENTICER P1B
CARPS FLORIDA JAYCATION JDF PEPSI 61U
182J TH BLACK EDITION 8R
 CARPS MISS FLORIDA 802F GSB RED DAKOTA 15D

EPDS	CE	BW	WW	YW	Milk	MCE	MWWT
	12.3	1.6	82.2	116	19.1	4.9	60.2
	BW: 92	ADJ WW: 738	SEPT 14 WW: 765	ADJ YW: 1308			

Lot 8

TANDEM T **FAVOR ME** 13L

1420705 TDMT 13L Jan. 20 2023 Polled

LCDR WITNESS 541C OLF OTIS Y43
LCDR FAVOR 149F WS MOTHER LODGE W21
 WS MISS SUGAR C4 CLRS GRADE-A 875 A
 CCLT ALLIANCE 91C WS ANISE A71
NUG DAIQUIRI 20H WS PILGRIM H182U
 NUG MARTINIA 69Z BROOKS SHINIA 1A
 SVS SCOUT 25X
 NUG MISS 960W

EPDS	CE	BW	WW	YW	Milk	MCE	MWWT
	8.4	2.6	87.5	129.6	18.9	3.1	62.7
	BW: 92	ADJ WW: 748	SEPT 14 WW: 812	ADJ YW: 1311			



8



Dam NUG 20H

Homo Polled/ Homo Black

Gestation: 289 days

Favor Me 13L is a good-looking bull, with a moderate birth weight and great gains. His half brother last year, sold to Beniuk Farms. His dam is a moderate framed cow with an attractive blaze.



Sire LCDR FAVOR 149F

Homo Polled/Homo Black

Gestation: 291 days

Jet black, long bodied bull, with great docility. His dam is a rock-solid cow and raises great calves. This LCDR Favor son, is Jet black, long bodied bull, with great docility. If you are looking for performance sire this is your guy. His dam is a rock-solid cow and raises great calves.



9

Lot 9	TANDEM T DO ME A FAVOR 16L
	1420986 TDMT 16L Jan. 23 2023 Polled
	LCDR WITNESS 541C OLF OTIS Y43
	LCDR FAVOR 149F WS MOTHER LODGE W21
	WS MISS SUGAR C4 CLRS GRADE-A 875 A
PRL TOBASCO 201T WS ANISE A71	
TSF EILEEN 41E PRL MAGNITUDE 362M	
MS PORTER 09 26W PRL PE'PE 372P	
TNT GUNNER N208	
PRL TATON 17T	

EPDS	CE	BW	WW	YW	Milk	MCE	MWWT
	5.9	4	86.4	126.3	22.2	2.9	65.4
	BW: 105	ADJ WW: 782	SEPT 14 WW: 878	ADJ YW: 1320			

Lot 10	TANDEM T BLACK ENTICER 1L
	1418695 TDMT 1L Jan. 03 2023 Polled
	SHS ENTICER P1B TCF/RCC TEMPTATION GJ640
	SKORS BLACK ENTICER 4W ROCKY HILLS JO
	SKORS MISS JOKER 10N PVF-BF BF26 BLACK JOKER
HSF HIGH ROLLER 12T SKORS MISS DESTINY 60K	
TSF DESTINATION 25D TJ 57J THE GAMBLER	
TSF BEYONCE 14B HSF RED FORTUNES SIS 33	
JDF WALLBANGER 61Z	
SKORS MS MAGNOLIA 416X	

EPDS	CE	BW	WW	YW	Milk	MCE	MWWT
	12.7	2.3	72.3	122.4	31.5	9.5	67.7
	BW: 96	ADJ WW: 715	SEPT 14 WW: 862	ADJ YW: 1224			

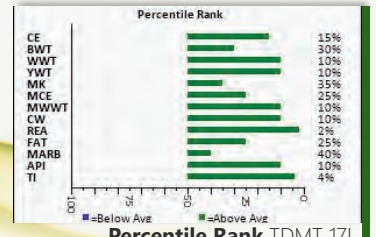
Homo Polled/ Homo Black

Gestation: 276 days

Black Enticer is sired by SKORS Black Enticer 4W, which we were fortunate enough to acquire some semen from John Beechinor We have a full sister to this bull, TANDEM T KEEP ENTICING 2K, and wow! She has turned out amazing!



10



Percentile Rank TDMT 17L

Homo Polled/ Hetero Black

Gestation: 285 days

If thick cattle are your thing, then look no further! TDMT 17L is a remarkably deep bull with an amazing thick curly hair coat. He boasts an impressive EPD profile stemming from his sire KWA Interstate 6J, who has amazing calving ease and growth! His dam, TSF Hattie 70H, has developed into a deep, wide top cow with a great utter.

11

Lot 11

TANDEM T INTERSTATE 17L

1421163 TDMT 17L Jan. 23 2023 Polled

HART INTERSTATE 102E GLS INTEGRATE Z3
KWA INTERSTATE 6J HART MISS 138B
 KWA MS ODYSSEY 6F KWA ODYSSEY 62C
 KWA MS ROCK 14X
 IPU LIEUTENANT 24E IPU RED DEPUTY 25C
TSF HATTIE 70H IPU MS. HORIZON 21A
 SKORS MS BARBEAU 84B HSF HIGH ROLLER 12T
 SKORS GUM BALL 105Z

EPDS	CE	BW	WW	YW	Milk	MCE	MWWT
	11.2	2.6	89.9	132.6	28.5	5.6	73.5
	BW: 97	ADJ WW: 761	SEPT 14 WW: 817	ADJ YW: 1268			

Lot 12

TANDEM T INTERSTATE 18L

1422051 TDMT 18L Jan. 29 2023 Polled

HART INTERSTATE 102E GLS INTEGRATE Z3
KWA INTERSTATE 6J HART MISS 138B
 KWA MS ODYSSEY 6F KWA ODYSSEY 62C
 KWA MS ROCK 14X
 IPU RED DEPUTY 25C KUNTZ SHERIFF 8A
TSF FABULOUS 35F IPU 56U MS. RED LINER 81A
 TSF CARMELO 4C WS BEEF KING W107
 PRL RED REQUEST 241R

EPDS	CE	BW	WW	YW	Milk	MCE	MWWT
	7.8	3.7	77.8	119	27.7	2.8	66.6
	BW: 105	ADJ WW: 790	SEPT 14 WW: 866	ADJ YW: 1364			



12

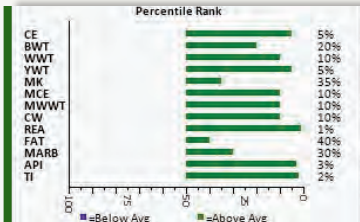


Dam TSF 35F

Homo Polled/ Hetero Black

Gestation: 292 days

18L had a great wean weight and will no doubt continue to develop into an amazing herd sire. If a heavier birth weight does not scare you, he will absolutely work great on mature cows. His attributes are a smooth head and tight shoulders backed by the KWA Interstate 6J herd sire. His dam is a larger red cow that calves easily with no assistance needed. We retained his half sister in our heifer pen because of her deep structure and beautiful cherry red hair coat.



Percentile Rank TDMT 19L

Homo Polled/ Homo Black

Gestation: 284 days

This is one of our favorite Interstate bull calves. He ranks top 5% in Calving ease and top 10% in wean weight. He has again, the smooth made head structure and calving ease shoulders with explosive growth that todays cattlemen are looking for! His dam, TSF Heredity 56H is a great looking cow with good udder formation and footing. Tandem T Interstate 19L's EPD profile speaks for itself not only on paper but in the pen.



Lot 13

TANDEM T INTERSTATE 19L

1423753 TDMT 19L Feb. 09 2023 Polled
 HART INTERSTATE 102E GLS INTEGRATE Z3
KWA INTERSTATE 6J HART MISS 138B
 KWA MS ODYSSEY 6F KWA ODYSSEY 62C
 KWA MS ROCK 14X
 HSF HIGH ROLLER 12T TJ 57J THE GAMBLER
TSF HEREDITY 56H HSF RED FORTUNES SIS 33
 TSF FRESCA 66F SVS WHISKEY 643D
 TSF CADILLAC 6C

EPDS	CE	BW	WW	YW	Milk	MCE	MWWT
	13.7	1.4	89.9	137.4	29.8	7.8	74.8
	BW: 94	ADJ WW: 789	SEPT 14 WW: 795	ADJ YW: 1373			

Lot 14

TANDEM T INTERSTATE 20L

1423886 TDMT 20L Feb. 10 2023 Polled
 HART INTERSTATE 102E GLS INTEGRATE Z3
KWA INTERSTATE 6J HART MISS 138B
 KWA MS ODYSSEY 6F KWA ODYSSEY 62C
 KWA MS ROCK 14X
 SVS CAPTAIN MORGAN 11Z HARVIE JDF WALLBANGER111X
TSF HAZEL 36H SUNNYVALLEY BLK JENNA 88U
 SUN RISE BLACK 45R RCC/TCF LINE DRIVE M181
 SUN RISE 35G

EPDS	CE	BW	WW	YW	Milk	MCE	MWWT
	13.2	1.4	82.7	133.1	25.4	9	66.8
	BW: 87	ADJ WW: 720	SEPT 14 WW: 719	ADJ YW: 1227			

Homo Polled/ Hetero Black

Gestation: 287 days

A bull calf, with a great calving ease score and moderate birth weight. His small head and smooth shoulders along with his 10% calving rank. His dam goes back to the Sun Rise Black 45R donor cow and SVS Captain Morgain 11Z, who are both extremely proven and been well used in the industry.





Dam BSCC 18X

Lot 15

TANDEM T **INTERSTATE** 23L

1424093 TDMT 23L Feb. 13 2023 Polled

HART INTERSTATE 102E GLS INTEGRATE Z3
KWA INTERSTATE 6J HART MISS 138B
 KWA MS ODYSSEY 6F KWA MS ROCK 14X
 SAND RANCH HAND WHEATLAND BULL 131L
BLACKSAND RANCH DEVA 18X SAND LUCKY CHARMER
 NEVAS L93 TNT BLACK SHADOW J30
 NEVAS BLACK FOOT H819

EPDS	CE	BW	WW	YW	Milk	MCE	MWWT
	13	1.6	76.9	117.6	30.8	8.8	69.3
	BW: 82	ADJ WW: 723	SEPT 14 WW: 724	ADJ YW: 1225			

Homo Polled/ Homo Black (Twin)

Gestation: 287 days

This combination from Blacksand Ranch Deva 18X and KWA Interstate 6J mating is one to look at! He ranks top 10% in caving ease and just has the smooth made look that makes him so attractive. His dam is getting up there in age, but still raises great calves every year. Obviously, longevity is one of her amazing attributes. Her full sister Blacksands Ranch Deva 21X has also gone on to do great things!



Lot 16

TANDEM T **LISTEN UP** 25L

1429034 TDMT 25L Feb. 22 2023 Polled

SKORS BLACK ENTICER 4W SHS ENTICER P1B
BEE EMERY 759J SKORS MISS JOKER 10N
 BEE DANCER 759E MRL MISSILE 138C
 HART STATE OF WAR 056C SKORS DANCER 71Z
TSF JESS 62J WELSH'S WARSAW 312Z
 TSF DESIGNER 44D HART MISS 102A
 JDF WALLBANGER 61Z
 TSF AGUILERA 18Z

EPDS	CE	BW	WW	YW	Milk	MCE	MWWT
	13.7	-2	63.2	95.1	25.2	8.3	56.8
	BW: 75	ADJ WW: 772	SEPT 14 WW: 701	ADJ YW: 1276			

Homo Polled/ Homo Black

Gestation: 283 days

If you are in the market for a heifer bull, this is your guy! With a light birth weight of 75 lbs. His dam goes back to the Hart State Of War calving ease sire.

Our Family Farm





THANK YOU

TO OUR 2023 BUYERS

Come for a visit!

From the town of Smoky Lake, take Highway #855 and head South. Turn East on Township Road 590. Travel approx. 1.5 miles, turn North on Range Road 172A and travel approx. ¼ mile – farm is on the East side of the range road.

Terms and Conditions

Sale Terms: All lots will be sold on a first come, first serve basis, until all lots are sold. Animals are sold in Canadian dollars. The right to the bulls will not be transferred until settlement is made. No money transfers will be made or expected until purchased lot has passed a breeding evaluation by a veterinarian.

Breeder Guarantee: All bulls are registered, unless indicated in the catalog, and papers will be transferred to new owner. All bulls are guaranteed satisfactory breeders in accordance with the Canadian Simmental Association guidelines. Notification of a problem must be made immediately. In no event will the seller be responsible for reimbursing more than the purchase price. Note that EPD's are current at the time of printing.

Liabilities: Following Semen Evaluation and once a bull is purchased, Tandem T Farms will not be liable for injury, incidents and accidents to animal purchased. We highly recommend if leaving your bull on farm, that insurance is placed on your purchased lot.

Delivery: Bulls can be delivered up to 300km at no charge, at a convenient time for both the seller and buyer. Points beyond 300km will be at cost. Bulls can remain on farm until April 1st, unless otherwise negotiated.

**Return Undeliverable
Canadian Addresses To:
T Bar C Cattle Co. Ltd.
Box 2330
Warman, SK S0K 4S0**

